

052579

RECEIVED  
LARAMIE COUNTY  
CHEYENNE, WY.

CERTIFIED LAND CORNER RECORDATION DEC 23 AM 9 08

DESCRIPTION OF CORNER EVIDENCE FOUND, AND ORIGINAL RECORD (If known)

20 | 21

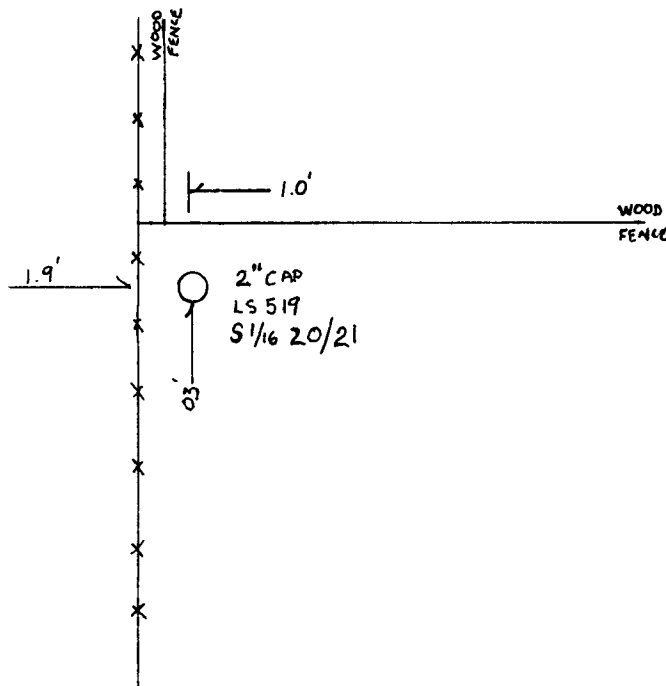
S. 1/16 Corner Section 20-21, T. 14 N., R. 66 W., 6th P.M.,  
Laramie County, Wyoming. Found 2" Surv-Kap L.S. 519, on  
ground surface.

S 1/16

DESCRIPTION OF MONUMENT AND ACCESSORIES ESTABLISHED  
TO PERPETUATE THE ORIGINAL LOCATION OF THIS CORNER:

None

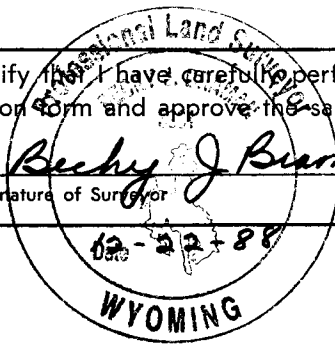
SKETCH, WITH COURSE AND DISTANCE TO ADJACENT CORNER IF DETERMINED IN THIS SURVEY.  
(May Sketch or Paste Reproduction on Reverse Side.)



NOT TO SCALE

I, BECKY J. BRAMAN certify that I have carefully performed or reviewed the work  
done on the diagrammed corner as reported on this recordation form and approve the same.

Becky J. Braman PL S 3881  
Signature of Surveyor Registration No.



STATE OF WYOMING,  
Office of Clerk and Recorder,  
County of LARAMIE

This "corner record" was filed for record on the \_\_\_\_\_ day of \_\_\_\_\_, 19\_\_\_\_, was noted  
on the cross-index plat and is assigned page No. \_\_\_\_\_, in book No. \_\_\_\_\_.

County Official		
Cross Index No. <u>Q 9</u>	T. <u>14N</u>	R. <u>66W 6th Mer.</u>
_____	T. _____	R. _____ Mer.
_____	T. _____	R. _____ Mer.
_____	T. _____	R. _____ Mer.
_____	T. _____	R. _____ Mer.
_____	T. _____	R. _____ Mer.
_____	T. _____	R. _____ Mer.